

# Wall Mounted Touch Panel

Model No.: T20, T20-1, T20-2, T20-3

1-4 Zone dimming switch/Glass touch panel/Wireless remote 30m distance/AAA x 2 battery



T20-1  
1 Zone switch



T20-2  
2 Zone switch



T20-3  
3 Zone switch



T20  
4 Zone switch

## Features

- Touch panel 1/2/3/4 zone dimming switch RF remote.
- Each zone can remote control multiple Skydance's 2.4G LED controllers.
- Ultra sensitive high strength glass touch panel.
- Touch keys with chord tones and LED indicator.
- Free installation, no wiring, removable.
- AAA x 2 battery powered.
- White & Black glass panel available.

CE RoHS EMC LVD RED

## Technical Parameters

Input and Output	
Output signal	RF[2.4GHz]
Working voltage	3VDC(AAA x 2)
Working current	< 5mA(Without tune) < 20mA(with tune)
Standby current	< 20µA
Standby time	1 year
Remote distance	30m (Barrier-free space)

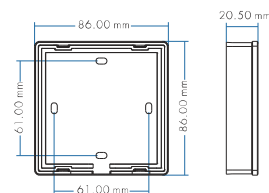
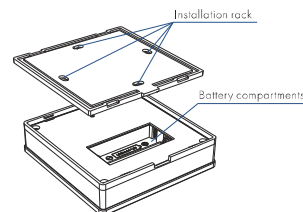
Environment	
Operation temperature	Ta:-30℃ ~ +55℃
Case temperature (Max.)	Tc:+65℃
IP rating	IP20

Safety and EMC	
EMC standard [EMC]	ETSI EN 301 489-1 V2.2.3 ETSI EN 301 489-17 V3.2.4
Safety standard [LVD]	EN 62368-1:2020+A11:2020
Radio Equipment [RED]	ETSI EN 300 328 V2.2.2
Certification	CE, EMC, LVD, RED

Warranty	
Warranty	5 years

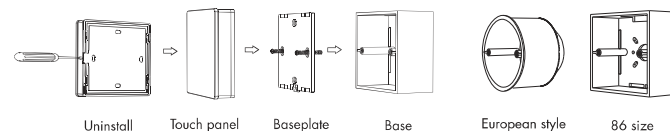
Weight	
Net weight	160g
Gross weight	190g

## Mechanical Structures and Installations



Installation diagram:

Typical base as below:

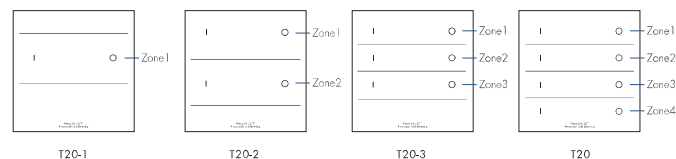


To fix the panel, two options are offered for selection:

Option 1: fix it on the wall with two screws.

Option 2: adhere it to the wall with pasteur.

## Key function



I — ON key

Short press: Turn on the light of each zone.

Long press(1-5s): Dimming up when light is on.

O — Off key

Short press: Turn off the light of each zone.

Long press(1-5s): Dimming down when light is on.

Long press(5s): Turn on or turn off tone when light is off.

End user can choose the suitable match/delete ways. Two options are offered for selection:

**Use the controller’s Match key**

**Match:**  
Short press match key, immediately press ON key of the touch panel.  
The LED indicator fast flash a few times means match is successful.

**Delete:**  
Press and hold match key for 5s to delete all match.  
The LED indicator fast flash a few times means all matched remotes were deleted.

**Use Power Restart**

**Match:**  
Switch off the power of the receiver, then switch on power, repeat again.  
Immediately short press ON key 3 times on the touch panel.  
The light blinks 3 times means match is successful.

**Delete:**  
Switch off the power of the receiver, then switch on power, repeat again.  
Immediately short press ON key 5 times on the touch panel.  
The light blinks 5 times means all matched remotes were deleted.

**Safety information**

- 1. Read all instructions carefully before you begin this installation.
- 2. When installing battery, pay attention to the battery positive and negative polarity.  
A long time without the remote control, remove the battery.  
When remote distance becomes smaller and insensitive, replace the battery.
- 3. If no response from the receiver, please re-match the remote.
- 4. Gently handle remote, beware of falling.
- 5. For indoor and dry location use only.